

## 115VAC Shaded Pole Parallel Shaft Gearmotors

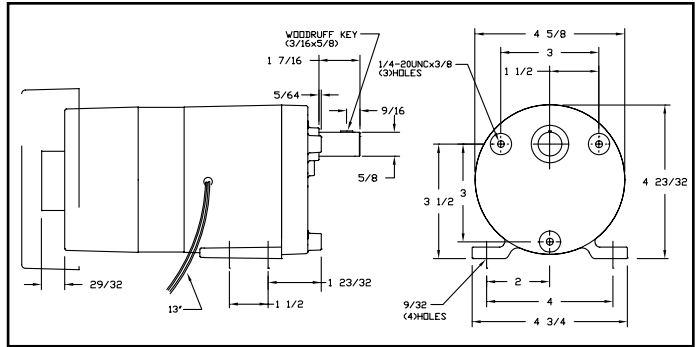
Dayton®

- Gearcase: die-cast zinc
- Lubrication: grease filled
- Gears: acetal and steel
- Bearings: porous bronze sleeve on case; ball on motor
- Mounting: all position
- 60 Hz
- Rotation: clockwise facing output shaft
- Thermal protection: none
- Ambient: 40°C

UL Recognized and CSA Certified.



No. 1LPL2



Nameplate RPM	Full Load Torque (in.-lb.)	Overhung Load (lb.)	Input HP	Gear Ratio	Full Load Amps	Length Less Shaft (in.)	Item No.	\$ Each
<b>Open, Fan Cooled, No Brake</b>								
7.0	113	150	1/10	250:1	2.60	7 1/8	1LPN5 ✓	259.50
13	113	150	1/10	128:1	2.60	7 1/8	1LPN2 ✓	259.50
30	113	150	1/10	52:1	2.60	7 1/8	1LPL8 ✓	259.50
60	59	150	1/10	27:1	2.60	7 1/8	1LPL6 ✓	259.50
<b>Open, Fan-Cooled, Power Off Disc Brake</b>								
2.0	113	150	1/10	750:1	2.60	8 3/8	1LPN7 ✓	350.50
7.0	113	150	1/10	250:1	2.60	8 3/8	1LPN4 ✓	366.50
13	113	150	1/10	128:1	2.60	8 3/8	1LPN1 ✓	366.50
30	113	150	1/10	52:1	2.60	8 3/8	1LPL7 ✓	350.50
60	59	150	1/10	27:1	2.60	8 3/8	1LPL2 ✓	365.75
<b>TEFC, No Brake</b>								
2.0	113	150	1/20	750:1	1.60	7 1/2	1LPN8 ✓	293.25
7.0	113	150	1/20	250:1	1.60	7 1/2	1LPN6 ✓	293.25
13	113	150	1/20	128:1	1.60	7 1/2	1LPN3 ✓	293.25
30	42	150	1/20	52:1	1.60	7 1/2	1LPL9 ✓	293.25

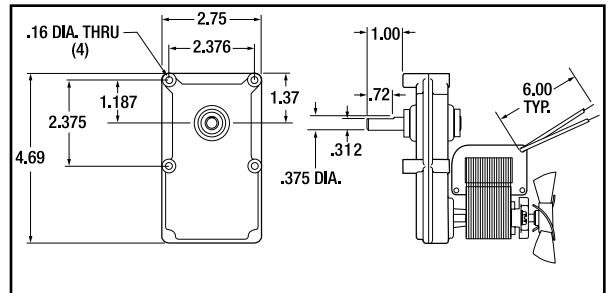
## 115 and 230VAC Shaded Pole Parallel Shaft Gearmotors

Dayton®

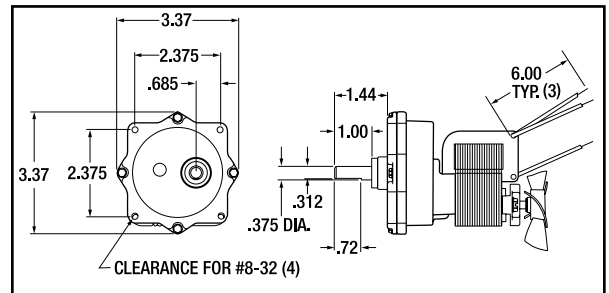
- Gearcase: die-cast zinc
  - Lubrication: grease filled
  - Gears: phenolic and steel
  - Bearings: porous bronze sleeve on both case and motor
  - Mounting: all-position
  - Rotation: clockwise facing output shaft
  - Thermal protection: none
- 60-Hz models are UL Recognized.



A No. 4Z150



B No. 3M103



Key	Nameplate RPM	Full Load Torque (in.-lb.)	Overhung Load (lb.)	Input HP	Gear Ratio	Full Load Amps	Length Less Shaft (in.)	Item No.	\$ Each
<b>115 Volt, 60 Hz (3 Leads)</b>									
A	6.0	72	7	1/60	525:1	1.50	5	4Z148 *✓	118.80
A	6.3	120	7	1/60	525:1	1.70	4 1/2	3M104 ✓	103.00
A	25	21	7	1/60	126:1	1.50	5	4Z149 *✓	118.80
A	25	22	7	1/60	126:1	2.00	4 1/2	4Z146 ✓	103.00
A	50	12	7	1/60	64:1	2.00	4 1/2	4Z147 ✓	103.00
A	50	12	7	1/60	64:1	1.40	5	4Z150 *✓	119.65
B	10	65	7	1/60	291:1	1.70	4 1/2	3M103 ✓	125.30
<b>230 Volt, 50 Hz (3 Leads)</b>									
A	5.0	72	7	1/60	525:1	0.75	5	1L462 *✓	142.45
A	5.0	120	7	1/60	525:1	0.75	4 1/2	1L457 ✓	112.20
A	21	21	7	1/60	126:1	0.75	5	1L461 *✓	142.45
A	21	22	7	1/60	126:1	0.75	4 1/2	1L458 ✓	112.20
A	42	12	7	1/60	64:1	0.70	4 1/2	1L459 ✓	112.20
B	8.5	85	7	1/60	291:1	0.75	4 1/2	1L456 ✓	142.45

\* Includes magnetic clapper brake.