

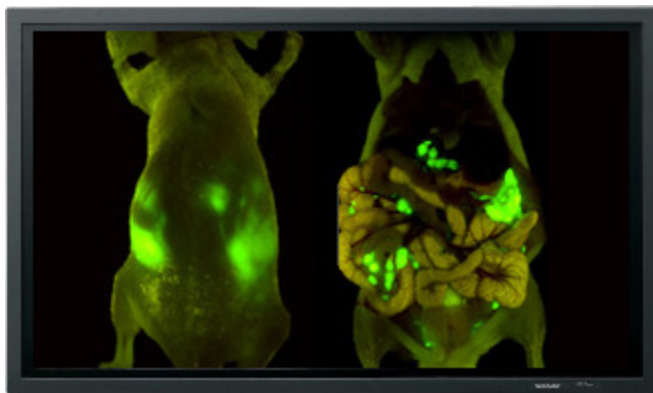


1304 Langham Creek, Suite 235
Houston, TX 77084
Phone: 281-579-0342
Fax: 281-579-1551

SHARP®

PN-455

Full 1920 x 1080 HD Resolution
45" Professional LCD Monitor



UNPARALLELED PERFORMANCE FROM THE WORLD LEADER AND INNOVATOR IN LCD TECHNOLOGY

The Sharp 45" Professional LCD Monitor redefines the professional large-format monitor market. With 1920 x 1080 (1080i) HDTV resolution and 45" diagonal screen size, it is the monitor of choice for the most sophisticated digital signage and display applications. Developed for commercial use, it offers proprietary and application specific features, unparalleled performance, image quality and reliability.

Sharp's "ASV" (Advanced Super View) Normally Black TFT LCD assures the best in video and graphics. Images are bright and highcontrast with an exceptionally fast response time and wide viewing angle.

For easy connectivity, this 45" Professional LCD Monitor allows simultaneous connection of multiple sources - with internal switching, loop-through and full RS-232C in/out.

Features:

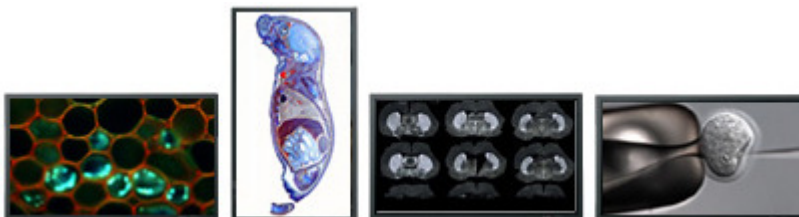
- LCD black TFT / bright pixel elimination
- Wide viewing angle (170° x 170°)
- Full HD resolution (1920 x 1080)
- High brightness 500 nit (cd/m²)
- 800:1 contrast ratio
- True 16 x 9 aspect ratio
- Built-in programmable 24-hour OFF timer

Key Benefits:

- Rugged metal cabinet for protective and efficient operation
- Includes 2 cooling fans for extended use applications
- Computer output capability for multi-monitor displays
- Digital DVI-D input provides full HD 1920 x 1080 resolution

Ideal For:

- Digital signage markets such as retail, banking, hospitality, and airports
- Vertical markets requiring high resolution such as medical or training simulations



Specifications

LCD Size/Type	45" Diagonal / Black TFT
Matrix Resolution	HD Panel 1920(H) x 1080(V)
Aspect Ratio	True 16 x 9
DTV Display Format	1080i/720p/480p/480i
PC Compatibility	VGA/SVGA/XGA/SXGA/WXGA
Brightness	500 nit (cd/m ²)
Video System	NTSC 3.58,4.42
Contrast Ratio	800:1
Response Time	Less than 12 ms. full on / full off
Viewing Angle	170° (Left/Right) / 170° (Up/Down)
Backlight Type/Life	Cold Cathode Fluorescent 60,000 hrs (landscape mode)
Cooling Fans / Fan Noise	2 Fans / 31 db
Power Source	120V / 60 Hz
Power Consumption	312 W, 18W in waiting mode, 2.9W in standby
Heat Dissipation	Approx. 1190 BTU, 68 BTU in waiting mode, 11 BTU in standby
Dimensions (w x h x d)	42.9" x 25.4" x 3.8" (approx.)
Mount	VESA 200mm (M6 x 15) x 6
Weight	59.4 lbs (approx.)
Operating Temp.	32 ~ 104° F (0 ~ 40° C)
Storage Temp.	-2 ~ 140° F (-20 ~ 60° C)
Humidity	20 ~ 80%
Limited Warranty	One (1) year parts/labor
Regulatory Approvals	UL 60950, FCC Class A
Metal Cabinet Color	Black

Speaker Terminals	10 Watts @ 6 ohms x 2
-------------------	-----------------------

Optional Loudspeakers	AN-45SP1 high quality (3-element) matched pair of audio loudspeakers (attaches to PN-455)
-----------------------	---

TERMINALS

Inputs:

DVI-D, RGB Analog (15 pin D-sub)
Component (3 BNC)
Composite (BNC) or S-Video (4 pin DIN)
Audio RCA (L/R) for AV
Audio 3.5mm stereo mini jack for PC
RS-232C (9 pin D-sub)

Outputs:

RGB Analog (15 pin D-sub), Audio RCA (L/R)

[[Home](#)][Product Index: [Categories](#) / [Types](#) / [Manufacturers](#)]

(Created 06-June-2006-AAK)
(Modified 06-June-2006-AAK)